



# **iPass Open Mobile 2.2.0.103 for Android Quick Start Guide**

**VERSION 1.1, FEBRUARY 2012**

Corporate Headquarters  
iPass Inc.  
3800 Bridge Parkway  
Redwood Shores, CA 94065 USA

[www.ipass.com](http://www.ipass.com)  
+1 650-232-4100  
+1 650-232-0227 fx

## TABLE OF CONTENTS

<b>Installing Open Mobile</b>	<b>3</b>
<b>Technical Requirements</b> .....	<b>3</b>
<b>Installation Process</b> .....	<b>3</b>
Activation Email .....	3
Android Market .....	4
Private Installer .....	4
<b>Upgrades</b> .....	<b>5</b>
Important Note on Upgrades .....	5
<b>Uninstallation</b> .....	<b>5</b>
<b>Using Open Mobile</b>	<b>6</b>
<b>Dashboard</b> .....	<b>6</b>
<b>Connection Manager</b> .....	<b>7</b>
<b>Usage Meter</b> .....	<b>8</b>
Usage Alerts .....	9
<b>Hotspot Finder</b> .....	<b>10</b>
<b>Options</b> .....	<b>11</b>
About .....	11
Account Settings .....	12
Usage Settings .....	12
<b>Support for Open Mobile</b>	<b>13</b>
<b>Open Mobile Logs</b> .....	<b>13</b>
<b>Troubleshooting Tips</b> .....	<b>13</b>



# Installing Open Mobile

## Technical Requirements

Using Open Mobile 2.2.0.103 for Android requires the following:

- A Wi-Fi capable device running the Android operating system 2.1 or later (the usage meter features, besides Recent Connections, require Android OS 2.2 or later).
- A screen with HVGA or higher resolution.
- Users need an iPass account in order for the service to function.

In addition, the user must be connected to the Internet (by Wi-Fi or their cellular network) to activate Open Mobile.

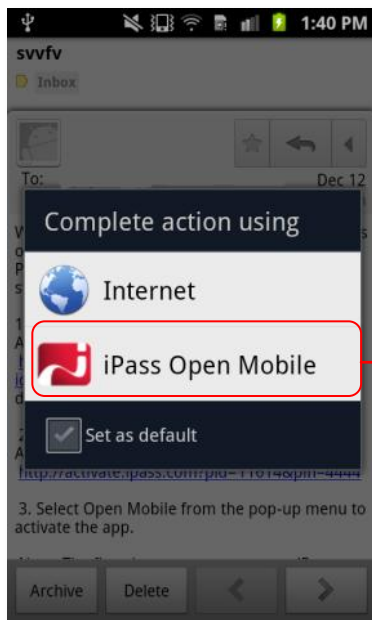
## Installation Process

### Activation Email

You should receive an email from your IT Administrator with download and activation instructions.

#### Activation Email Instructions:

1. Download the iPass Open Mobile app from the Android Market to your handheld device. Select the Market option when prompted for the fastest download.
2. On your handheld device, tap on the activation link and select **iPass Open Mobile** from the popup menu.
3. The first time you connect to a network with iPass Open Mobile, you will be prompted to enter your Account Credentials.



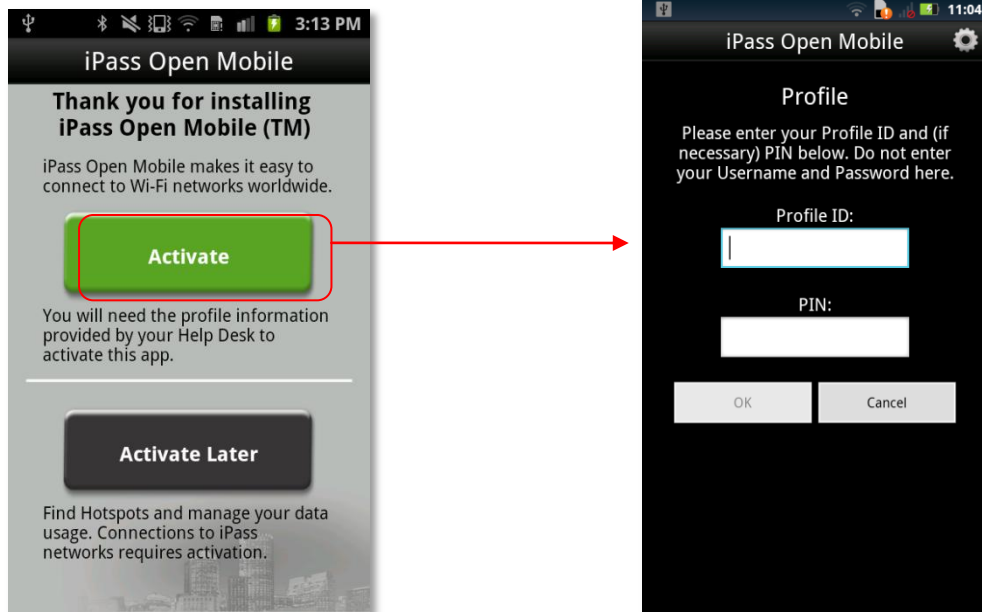
Select **iPass Open Mobile** from the popup menu.

## Android Market

You will need a Profile ID and possibly a PIN before downloading the Open Mobile app from the Android Market.

**To install Open Mobile from the Android Market:**

1. Download the Open Mobile app from the Android Market.
2. On the Welcome Screen, tap the **Activate My Account** button.
3. Enter your **Profile ID** and (if necessary) **PIN**
4. If you are using a Test profile, tap the bottom of the screen three times to enter Test Profile Mode before entering your Profile ID and PIN.
5. Tap **OK**.



## Private Installer

If you received the Android application directly from your IT Administrator (by email, web page link, or private version of the Android Market), do the following

**To install Open Mobile from a bundled installer:**

1. On the Home screen, tap **Menu | Settings | Applications**, and check **Unknown Sources**.
2. Download the Open Mobile app from an email attachment, link to download, or Private Market.
3. In some cases when downloading using a link or email attachment, you will have to navigate to the Download folder using a file manager app such as Files, My Files, or Astro. From there, tap the Installer to launch it and tap Install to install.
4. When the installer is complete, tap **Open** to launch Open Mobile.

If the base .apk file is installed, the user will have to enter Profile ID and PIN to activate.

## Upgrades

You will receive software upgrades from the Android Market (regardless of how the app was distributed).

### Important Note on Upgrades

To ensure that you receive all important upgrades, we recommend that you go to the **My Apps** section in the Android Market and check **Allow automatic updating** next to the Open Mobile app.

## Uninstallation

To uninstall Open Mobile, browse to **Settings | Applications | Manage Applications**, select Open Mobile from the list, and then tap the **Uninstall** button.



# Using Open Mobile

The Open Mobile for Android interface is illustrated here.

## Dashboard

There are three main buttons on the dashboard, with an **Options** button in the top right corner. The three main buttons can be tapped to take you to a dialog with more details, described below, and they represent your current connection (the Connection Manager), your past connections (the Usage Meter), and your future connections (the Hotspot Finder).



## Connection Manager

Open Mobile displays Available Networks and their signal strength. The list is refreshed every 15 seconds. To connect or disconnect from a network, tap on it.

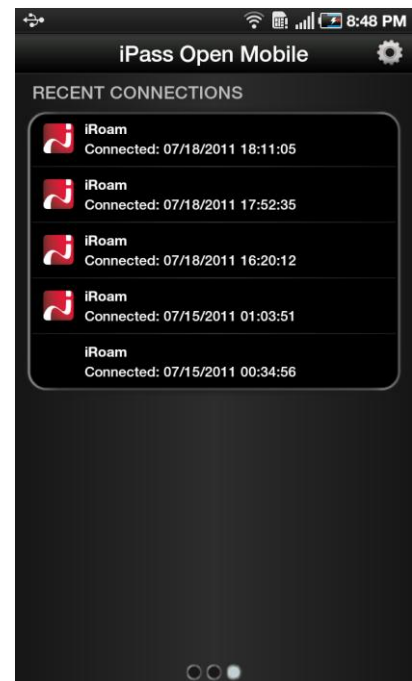
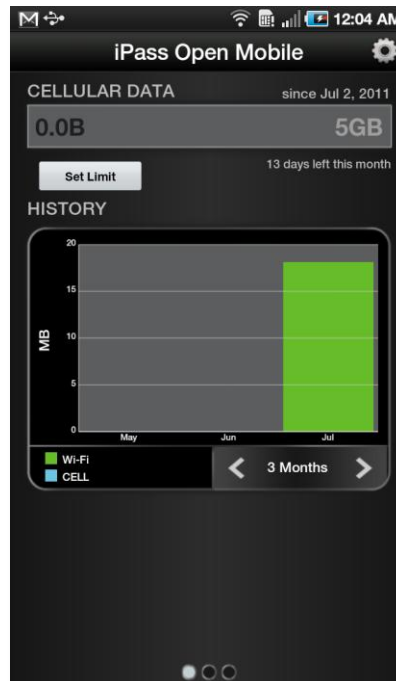
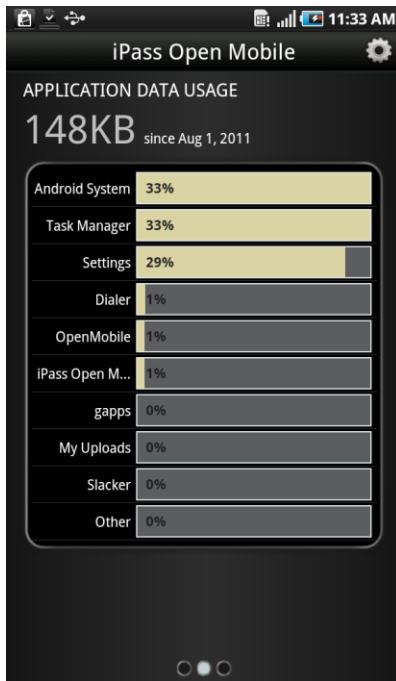


## Usage Meter

There are three dialogs in the **Usage Meter** section.

- The **Usage Meter** dialog displays graphs of your data usage.
- The **Application Data Usage** dialog displays your top ten applications.
- The **Recent Connections** dialog shows your last twenty connections. (Users on Android 2.1 or earlier will only see this screen.)

To move between them, swipe your finger from left to right or right to left.




---

### Application Data

---





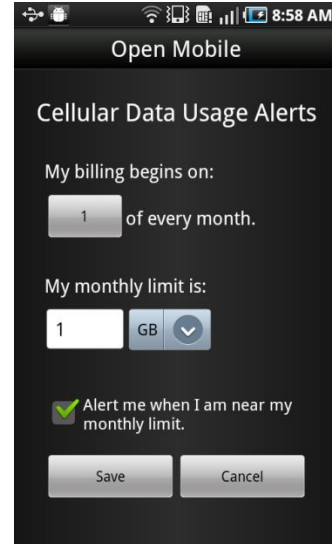
## Usage Alerts

Open Mobile can send data usage alerts when the user is close to reaching the monthly cellular data limit.

### To set the cellular data limit:

1. Tap **Set Limit** on the **Usage Meter** dialog (or the **Usage Setting** button on the **Options** dialog).
2. Under **My billing begins on:** tap the box to enter the first calendar day of your billing period.
3. Under **My monthly limit is:** tap the box to enter your limit and select the memory unit from the dropdown.
4. Tap the box to check Alert me when I am near my monthly limit.
5. Tap **Save**.

The **Application Data Usage** dialog will display a list of the user's top ten applications in order of data usage (showing the total usage and each application's percentage of the total).



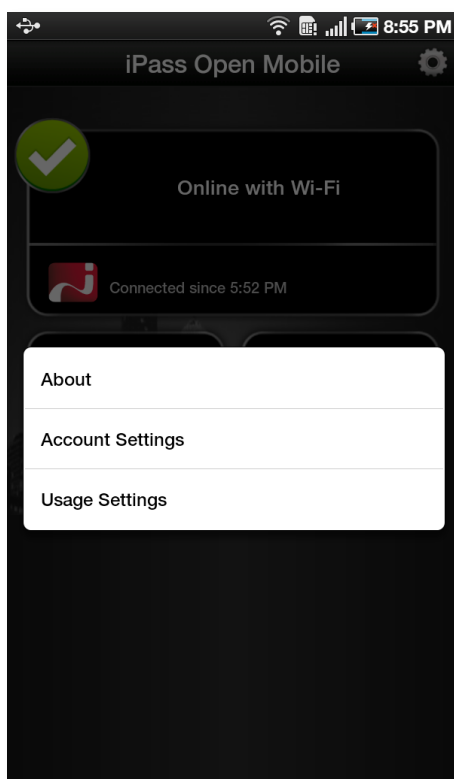
## Hotspot Finder



Open Mobile for Android includes a Hotspot Finder that enables users to locate iPass Wi-Fi hotspots anywhere in the world. Enter a location in the search box, or tap the **List nearby hotspots** button, for a list of hotspots and their locations. The Hotspot Finder requires an Internet connection to locate hotspots.

## Options

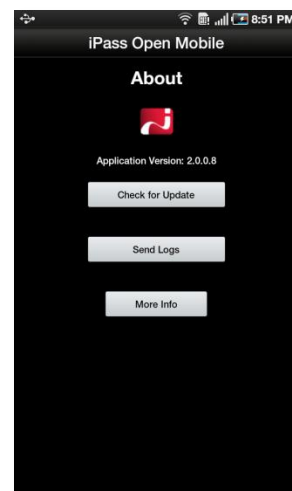
Tapping the **Options** button on the upper-right corner of the screen (or the Menu button on your Android device) will open a window with three options: **About**, **Account Settings**, and **Usage Settings**.



## About

There are three buttons on the **About** dialog: **Check for Update**, **Send Logs**, and **More Info**.

- **Check for Update** will check for any available Profile and Directory update (not software update)—these updates happen automatically every 24 hours.
- **Send Logs** will open an email with an attachment of your current logs to your IT Help Desk (see page 13 for more information on this feature).
- **More Info** will display information on your version of Open Mobile.



## Account Settings

The screenshot shows the 'Open Mobile' application interface for 'Account Settings'. At the top, the status bar shows the time as 8:53 AM. The app title 'Open Mobile' is centered above the 'Account Settings' header. Below the header are three input fields: 'Username' containing 'ipass', 'Password' with masked characters, and an empty 'Domain' field. Underneath are two checked checkboxes: 'Save Password' and 'Auto-Connect'. At the bottom are two buttons: 'Save' and 'Cancel'.

Enter or change your iPass account credentials here, including username, password, domain, and possibly prefix (not shown above). If Save Password is enabled, you can check the box here to save the entered password and doing so will make connecting to networks a one-click experience.

### ***Auto-Connect***

Auto-Connect lets you automatically connect to OpenAccess and iPass-authenticated networks. If enabled, Auto-Connect can make connecting to the Internet a 'zero-click' experience. Save Password must be selected in order to enable Auto-Connect.

When multiple networks are available in the same location, Open Mobile uses a sophisticated algorithm to determine a network for Auto-Connect.

Open Mobile will automatically re-connect to a network when the user is unintentionally disconnected (for example, if the network signal is lost).

If you choose to disconnect from an Auto-Connect network, Auto-Connect will be disabled until you explicitly attempt to connect again.

*If the user disables Save Password while Auto-Connect is enabled, then Auto-Connect will automatically be disabled.*

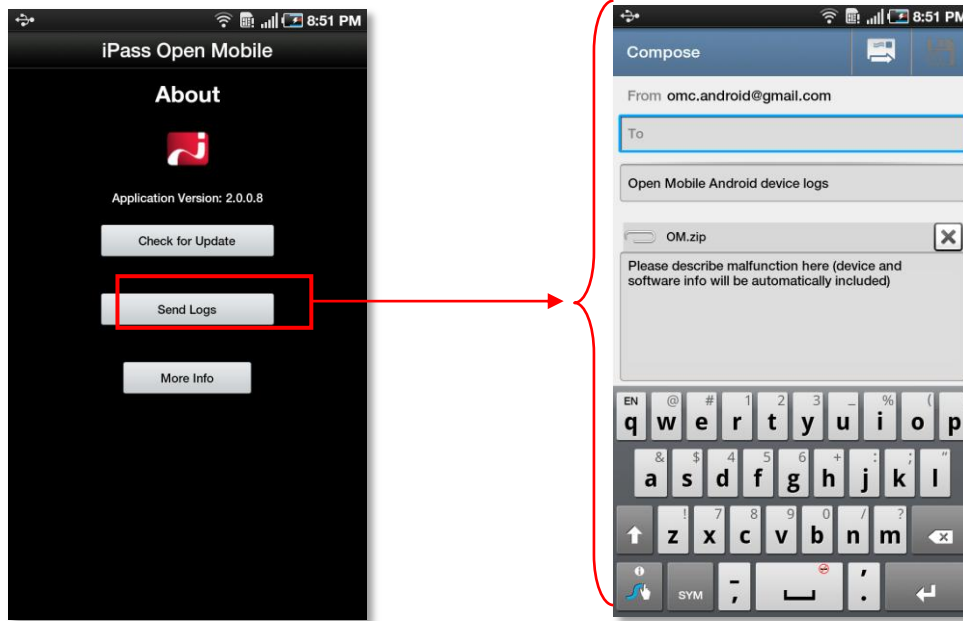
## Usage Settings

You can set cellular data usage limits and the monthly billing cycle for the usage meter under Usage Settings. For more details see the Usage Meter section on page 9.

# Support for Open Mobile

## Open Mobile Logs

Open Mobile enables users to send troubleshooting logs for support using the **Send Logs** button. Logs can be sent by corporate email (if ZIP files are allowed), standard email, or by SMS message.



## Troubleshooting Tips

These tips may be helpful to users attempting to connect over Wi-Fi.

### ***Duplicate SSID***

Open Mobile identifies iPass Wi-Fi networks by their network name (SSID). A network name that duplicates a network name in the iPass Network directory will display the iPass logo in Open Mobile, normally indicating that it is an iPass network. However, there are some circumstances where the indicated network is not actually an iPass location, such as the following:

- The local provider is using a name that is also used by one of the iPass network providers.
- The local provider has other locations that are part of the iPass service, but has excluded this particular location.

### ***Failed Venue Login***

On occasion, an association to a Wi-Fi access point is successful, but the log in to the venue fails because of a timeout, authentication failure, or some other error.

Connecting to an iPass network requires not just a successful association; Open Mobile must also receive an IP address from the venue and it must be able to pass HTTPS communication to the access gateway. A weak signal can

cause a failure in the IP address assignment or HTTPS communication. Moving closer to the access point, or moving to a location with a stronger signal, may resolve this situation.

### ***Back-End Infrastructure Issues***

Authentication errors can occur if the back-end authentication infrastructure is not available. This could be an outage at the provider, or with your RoamServer or AAA system.

### ***Personal Wi-Fi***

Some common issues that can occur for personal Wi-Fi access points include:

- The home access point has MAC address filtering, which prohibits the user from communicating over it even if a successful association is made.
- A weak signal prevents association.
- The location is 802.1x-enabled. 802.1x connections are not currently supported.

Copyright ©2012, iPass Inc. All rights reserved.

**Trademarks**

iPass, iPassConnect, ExpressConnect, iPassNet, RoamServer, NetServer, iPass Mobile Office, DeviceID, EPM, iSEEL, iPass Alliance, Open Mobile, and the iPass logo are trademarks of iPass Inc.

All other brand or product names are trademarks or registered trademarks of their respective companies.

**Warranty**

No part of this document may be reproduced, disclosed, electronically distributed, or used without the prior consent of the copyright holder. Use of the software and documentation is governed by the terms and conditions of the iPass Corporate Remote Access Agreement, or Channel Partner Reseller Agreement.

Information in this document is subject to change without notice.

Every effort has been made to use fictional companies and locations in this document. Any actual company names or locations are strictly coincidental and do not constitute endorsement.

<b>Document Changelog</b>	
Version 1.0, February 2012	No changes.
v1.1	Removed description of Default Mode.

