



iPass Inflight Wi-Fi Connection Quick Start Guide

VERSION 3.4, OCTOBER 2012

Corporate Headquarters
iPass Inc.
3800 Bridge Parkway
Redwood Shores, CA 94065 USA

www.ipass.com
+1 650-232-4100
+1 650-232-0227 fx

TABLE OF CONTENTS

Welcome to iPass Inflight Wi-Fi	3
Features of Inflight Wi-Fi	3
Limitations.....	3
Usage for Inflight Wi-Fi.....	3
System Requirements	4
Laptops.....	4
Handheld Devices.....	4
Making an iPass Inflight Wi-Fi Connection	5
About CAPTCHA	5
The Gogo Inflight Service	5
Using Open Mobile to Connect.....	5
Using a Web Browser.....	6
The International Inflight Service	7
Using Open Mobile to Connect.....	7
Using a Web Browser.....	8



Welcome to iPass Inflight Wi-Fi

The iPass Inflight Wi-Fi Connection service enables secure and easy Wi-Fi connections on many commercial airliners.

- For US domestic and Canadian flights, iPass Inflight is powered by Aircell's Gogo Inflight. For a list of carriers that offer Aircell Gogo service, visit the coverage page at <http://www.gogoinflight.com>.
- For transcontinental international flights, iPass Inflight is powered by T-Mobile. Carriers currently offering the service on many flights include Lufthansa, Gulf Air, Transaero, and Japan Airlines.

Features of Inflight Wi-Fi

iPass Inflight Wi-Fi includes these features:

- You can use your existing iPass authentication credentials.
- You are authenticated to onboard Wi-Fi hotspots, and your enterprise's security policies are enforced on connection.
- iPass Inflight Wi-Fi uses CAPTCHA to ensure security.
- The service is available for Windows and Mac laptops, as well as iOS and Android handheld devices.

Limitations

These limitations apply to iPass Inflight Wi-Fi connections.

- Service may not be available on all flights from a particular carrier. (Not all aircraft are currently equipped with Wi-Fi.)
- Gogo Inflight may only be used on US domestic and Canadian flights, at altitudes over 10,000 feet.
- International Inflight may only be used on transcontinental international flights.
- Voice Over IP (VOIP) services, such as Skype, are not supported.
- Implicit log-off, such as 802.11 radio link drop and laptop shutdown, is not supported.

Usage for Inflight Wi-Fi

iPass Inflight Wi-Fi usage is tracked by flight *segment*. A flight segment is any interval between takeoff and landing. A non-stop flight is one segment, while a flight with a stop in the middle comprises two segments. Establishing a connection to the iPass Inflight Wi-Fi service on two successive segments will count as two sessions, and will be charged as two distinct transactions.

Note that you may stay connected as long as you like during a flight segment, subject to airline regulations, safety rules, and technical constraints.

You can only connect from one device at a time with your iPass credentials. A second simultaneous connection will disconnect the first connection.



System Requirements

To make an iPass Inflight Wi-Fi connection, your Open Mobile administrator must have enabled Gogo Inflight (for US domestic flights) or International Inflight (for international flights). Check with your help desk for more information.

In addition, your particular platform will have technical requirements, as follows:

Laptops

- **Windows:** Windows operating system; Microsoft Internet Explorer or Mozilla Firefox Web browser. Gogo Inflight requires Open Mobile v1.3 or later; International Inflight requires Open Mobile v2.2 or later.
- **Mac OS X:** Mac OS X; Safari or other Web browser. Gogo Inflight requires Open Mobile v1.1 or later; International Inflight requires Open Mobile v2.1 or later.

Handheld Devices

- **For Gogo Inflight:** iOS or Android operating system; Open Mobile client or Web browser installed.
- **For International Inflight:** Android operating system only; Open Mobile client or Web browser installed. International Inflight connections are not supported on iOS (iPhone/iPad) devices.



Making an iPass Inflight Wi-Fi Connection

Making an iPass Inflight Wi-Fi connection is easy on your supported device. You can connect using Open Mobile, or you can connect using a Web browser.

For more information on using Open Mobile to connect to Wi-Fi hotspots worldwide, see the Open Mobile Quick Start Guide.

About CAPTCHA

The United States Federal Aviation Administration (FAA) mandates the use of CAPTCHA verification for all airborne Wi-Fi connections, including those made by Open Mobile.

CAPTCHA verification, used on many popular Web sites, requires you to enter a randomly generated verification code to ensure your authenticity. These codes are deliberately designed to be difficult for machines to read.

Review and enter the code exactly as it appears on the screen. CAPTCHA codes are case-sensitive. You must enter the code within 120 seconds of login, and you are permitted up to 15 attempts to enter the code correctly.

The Gogo Inflight Service

If iPass Inflight has been enabled for domestic US and Canadian flights by your Open Mobile administrator, you can connect to the service using either Open Mobile or your supported device's Web browser.



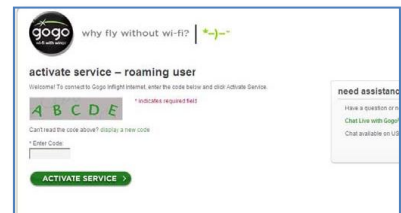
Using Open Mobile to Connect

Use your existing Open Mobile credentials to connect on any supported device.

Using a Windows or Mac Laptop

To make an iPass Inflight connection with Open Mobile on a laptop,

1. Launch Open Mobile.
2. From the list of available networks, select *gogoinflight*.
3. Click **Connect**.
4. On the **Activate Service** login page, review the CAPTCHA verification code.
5. In **Enter Code**, enter the CAPTCHA verification code as displayed, and then click **Activate Service**. You are then connected. On the Gogo status page, your status is shown as *Active*.



Using a Handheld Device

For iOS Devices

To make an iPass Inflight connection using Open Mobile on an iOS device,



1. Tap **Settings**, and then select **Wi-Fi**. Choose the *gogoinflight* Wi-Fi network.
2. Exit **Settings**, and then launch Open Mobile.
3. Tap **Log In**. Open Mobile will connect to the aircraft's access point.
4. On the Gogo login page, in **Enter Code**, enter the CAPTCHA verification code as it is presented. Then, tap **Activate**. You are connected and the Aircell status page displays.



For Android Devices

To make an iPass Inflight connection using Open Mobile on an Android device,

1. Launch Open Mobile and connect to the *gogoinflight* network on the aircraft.
2. On the Gogo login page, in **Enter Code**, enter the CAPTCHA verification code as it is presented. Then, tap **Activate**. You are then connected. On the Gogo status page, your status is shown as *Active*.

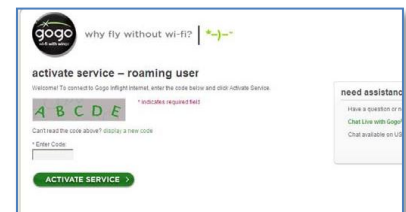
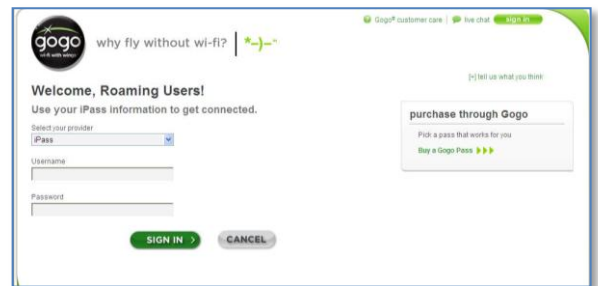
Airplane Mode: Putting your handheld device into Airplane mode will disable its 3G and Wi-Fi connectivity. However, once in Airplane mode, you can re-enable your Wi-Fi connection separately, which will allow Inflight Wi-Fi connections. For directions on enabling the Wi-Fi connection, consult your device's documentation.

Using a Web Browser

You can also use the Web browser on a supported device to connect to iPass Inflight Wi-Fi, without launching Open Mobile.

To connect using a Web browser on an aircraft equipped with iPass Inflight,

1. On your device, launch your Web browser. The Gogo login page displays.
2. At the bottom of the Gogo login page, tap **Roaming**. The **Roaming Users** page displays.
3. From the **Select your Provider** drop-down list, choose *iPass*.
4. In **Username**, enter your iPass username and domain (for example, *jsmith@example.com*, where "jsmith" is your iPass username and "example.com" is your company's iPass roaming domain). Contact your service administrator if you do not know your iPass roaming domain.
5. In **Password**, enter your iPass password.
6. Tap **Sign In**.
7. On the **Activate Service – Roaming User** page, in **Enter Code**, enter the CAPTCHA verification code as it is displayed. Then, click **Activate Service**. You are then connected. On the Gogo status page, your status is shown as *Active*.



The International Inflight Service

If iPass Inflight has been enabled for international transcontinental flights by your IT administrator, you can connect to the service using either Open Mobile or your device's Web browser.

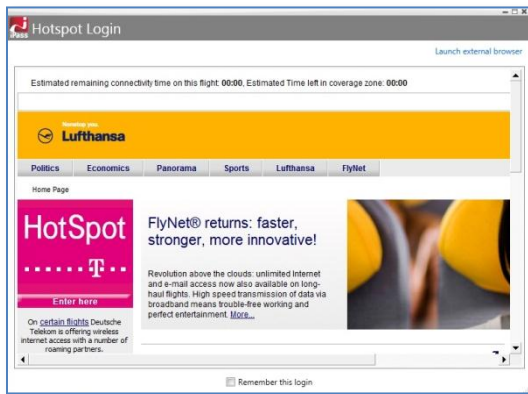
Using Open Mobile to Connect

Use your existing Open Mobile credentials to connect on any supported device.

Using a Windows or Mac Laptop

To make an International Inflight connection with Open Mobile on a laptop,

1. Launch Open Mobile.



2. From the list of available networks, select the aircraft's Wi-Fi network.

3. Click **Connect**.

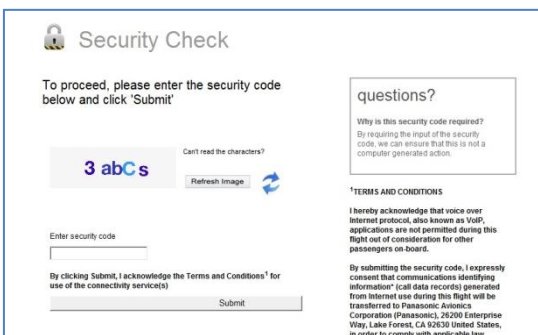
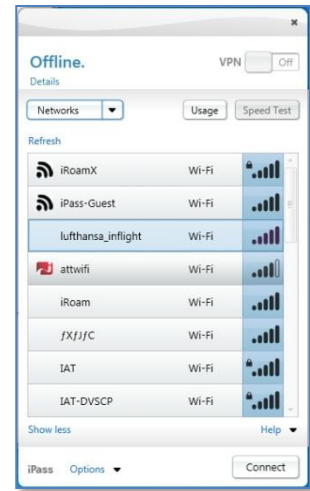
4. On the **Hotspot Login** page, under **Hotspot**, tap **Enter Here**.

5. On the **Security Check** page, review the CAPTCHA verification code.

6. Enter the CAPTCHA verification code as displayed, and then click **Submit**.

- a. If you have not saved your username and password in Open Mobile, enter them and then, click **Connect**.

- b. If you have saved your username and password, you are connected without being prompted for them.



Using an Android Device

To make an International Inflight connection using Open Mobile on an Android device,

1. Launch Open Mobile and connect to the Wi-Fi network on the aircraft.
2. On the T-Mobile login page, in **Enter Code**, enter the CAPTCHA verification code as it is presented. Then, tap **Submit**.

- a. If you have not saved your username and password in Open Mobile, enter them. Then, tap **Connect**.
- b. If you have saved your username and password, you are connected without being prompted for them.

International Inflight is not currently supported on iOS devices (neither iPhone nor iPad).

Using a Web Browser

You can also use the Web browser on a supported device to connect to iPass Inflight Wi-Fi, without launching Open Mobile.

To connect using a Web browser on an aircraft equipped with iPass Inflight,

1. On your device, launch your Web browser. The aircraft's login page displays.
2. On the T-Mobile login page, tap **Enter Here**.
3. On the **Security Check** page, review the CAPTCHA verification code.
4. Enter the CAPTCHA verification code as displayed, and then click **Submit**.
5. On the hotspot page, enter your Open Mobile username and password, and then click **Connect**.



Copyright ©2012, iPass Inc. All rights reserved.

Trademarks

iPass, iPassConnect, ExpressConnect, iPassNet, RoamServer, NetServer, iPass Mobile Office, DeviceID, EPM, iSEEL, iPass Alliance, Open Mobile, and the iPass logo are trademarks of iPass Inc.

All other brand or product names are trademarks or registered trademarks of their respective companies.

Warranty

No part of this document may be reproduced, disclosed, electronically distributed, or used without the prior consent of the copyright holder.

Use of the software and documentation is governed by the terms and conditions of the iPass Corporate Remote Access Agreement, or Channel Partner Reseller Agreement.

Information in this document is subject to change without notice.

Every effort has been made to use fictional companies and locations in this document. Any actual company names or locations are strictly coincidental and do not constitute endorsement.

